

XPRESS TO ENDLESS COMFORT

Lume Xpress Series

Midea Electric Water Heater

midea.mt



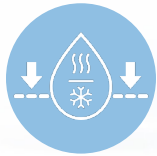
Midea

make yourself at home

MEGAWATER

20% MORE HOT WATER AVAILABILITY

Supported by our game-changing MegaWater technology, the utilization of hot water is greatly enhanced, allowing up to 20% more hot water availability for your extended enjoyment.



Reduce Mix of
Hot & Cold Water



Patented MegaWater
Booster



MEGAWATER

NEVER RUN OUT OF HOT WATER, EVEN DURING PEAK USAGE TIMES

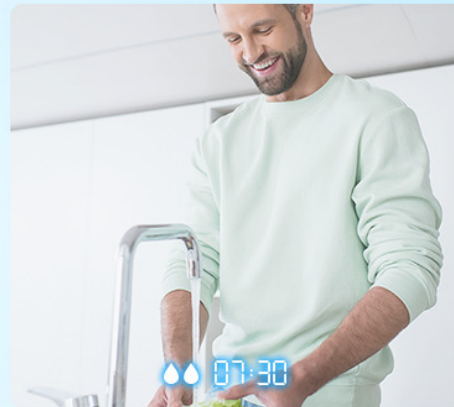
Troubled by insufficient hot water while everyone is in a hurry to go out on a weekday morning? Suffering from washing vegetables with ice-cold water in winters? Backed by our MegaWater technology, these problems will no longer exist!



Personal Care



Hand-Washing



Cleanse Fruits & Veggies



Xpress Comfort

XPRESS HEATING, COMFY SHOWERING

Our water heater can deliver optimally heated water faster, with Xpress mode. The FlowGuide technology is employed to maximize the heating rate, ensuring you a comfortable showering experience with less waiting time.



FlowGuide Technology



Maximize Heating Rate

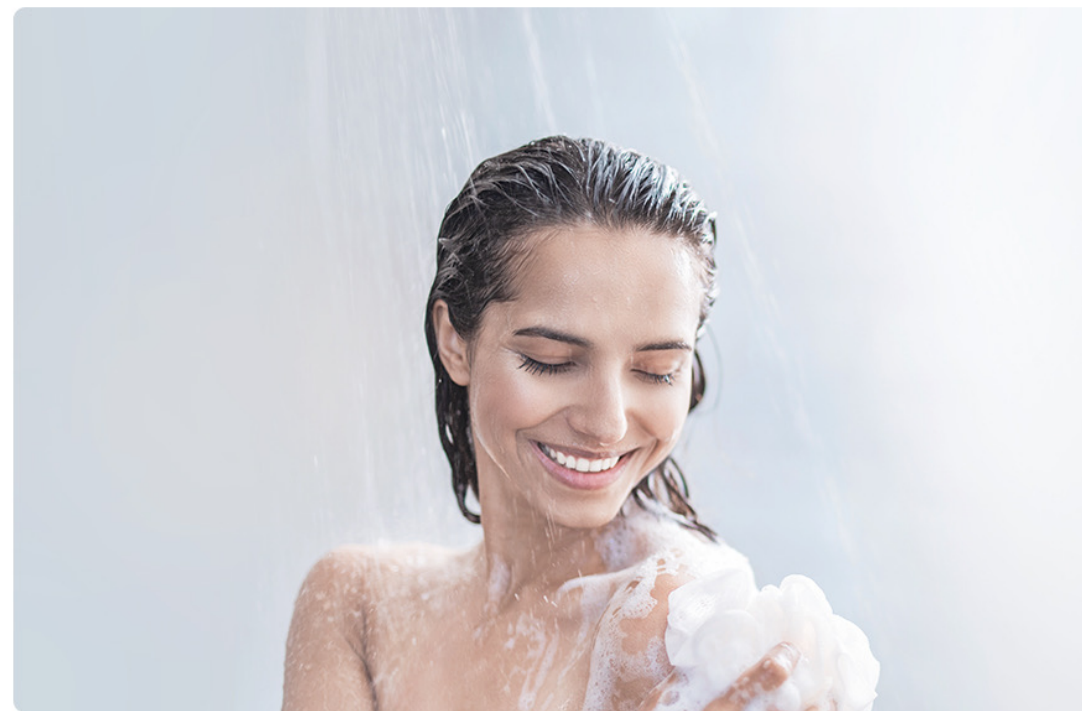


Reduce Waiting Time



Xpress Comfort

LESS WAIT-TIME, MORE ME-TIME



Indulge you to get up slightly later than your normal wake-up time, before a refreshing shower.

There's perhaps no better elixir than taking a relaxing shower at the end of a working day, without waiting long.



LONG LIVE THE TANK, WITH Ti+ SapphirEnamel ATTACHED

The innovative Ti+ SapphirEnamel layer promotes the water tank to be more durable by efficiently resisting corrosion, rust and scale buildup, sustaining your superior use experience.



5-Year Tank Warranty



Anti-Rust,
Corrosion or Scaling

Ti+ SapphirEnamel Tank with 3-Layer Tech

- High-level decarburization steel plate layer
- Micro-powder adhesion layer
- 850° C Hi-temp sintered Ti+ SapphirEnamel layer

Ti+ SapphirEnamel HEATING ELEMENT

Made of Ti+ SapphirEnamel-coated SUS316L stainless steel, the heating element is highly resistant to corrosion and scaling, sustaining the best heating performance.



SUS316L Stainless Steel



Anti- Corrosion & Scaling



SUPERIOR HEAT PRESERVATION PERFORMANCE

The heat preservation layer, made of polyurethane foam, an excellent insulating material, stores hot water with slower temperature declining by 10° C within 12 hours, and as such saves more energy consumed by repetitive heating.



Note: According to the Midea Lab, the data mentioned here is calculated based on the 30L electric water heater.

MULTI-POINT ShowerSafe SYSTEM

The reliable ShowerSafe system is specially devised, after a great amount of experiments and simulation tests, in order to guarantee a comfortable and safe shower experience for you to truly enjoy yourself.



Dry Heating Prevention



IPX4 Water-Proof Body



Pressure-Relief Safety Valve



Auto Power Off for Overheat Protection



SPECIFICATIONS

MODEL	D10-20VD1*	D30-25VD1
Capacity, L	10	30
Rated Power, W	2000	2500
Voltage, V	220-240	220-240
Frequency, HZ	50/60	50/60
Current, A	8.69	10.86
External Dimensions H/W/D, mm	324*324*297	440*440*392
Net Weight, Kg	7.4	13
Gross Weight, Kg	8.4	15
Number Of Users	1	1-2
Control Panel	MECHANICAL	MECHANICAL
Temperature Range, ° C	30-65	30-75
Maximum Working Pressure, MPa	0.75	0.75
Waterproof Grade	IPX4	IPX4
ErP Rating	A	C
Heating Indicator	Y	Y
Over Heat Protection	Y	Y
Temperature Limit, ° C	105	101
Inner Tank	Enamel tank	Enamel tank
Magnesium Anode Size, mm	φ18*110	φ18*110
Type of Heating Element	SUS316L Enamel	SUS316L Enamel
Power Cable length, m	1.5/1.8/1.0	1.5/1.8/1.0
Type Of Mounting	VERTICAL	VERTICAL
Standard Mount	Hang Mount	Hang Mount
Water Connection size	G1/2	G1/2
Mount Accessory	Bulgy Screw/Safety Valve/Mounting Plate	Bulgy Screw/Safety Valve/Mounting Plate

* Available in under sink & over sink options



midea.mt